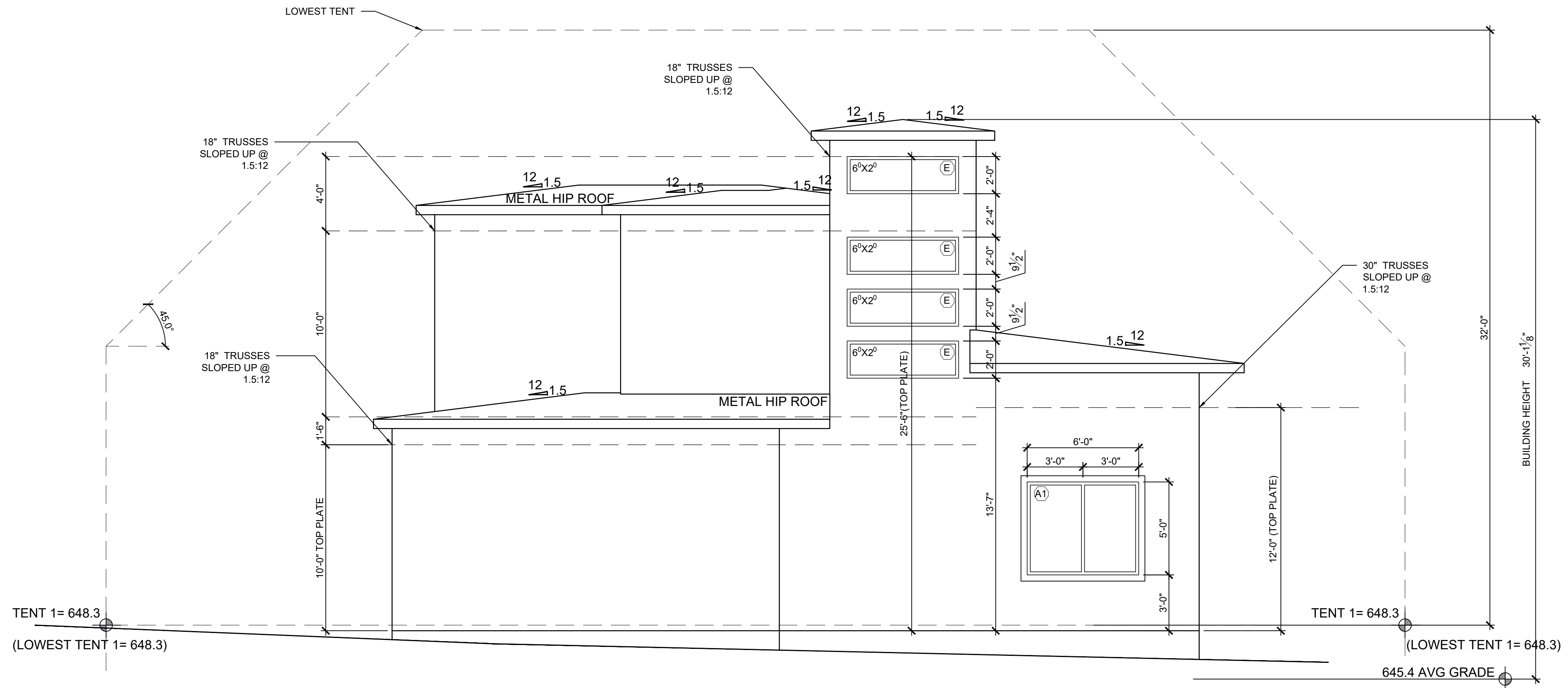


SOUTH WEST ELEVATION
SCALE: 1/4" = 1'-0" (HALF SCALE = 1/8" = 1'-0")

1



NORTH EAST ELEVATION
SCALE: 1/4" = 1'-0" (HALF SCALE = 1/8" = 1'-0")

2



02/01/2019

date issues & revisions dsgrn aprv

description

ELEVATIONS

number

A4.0